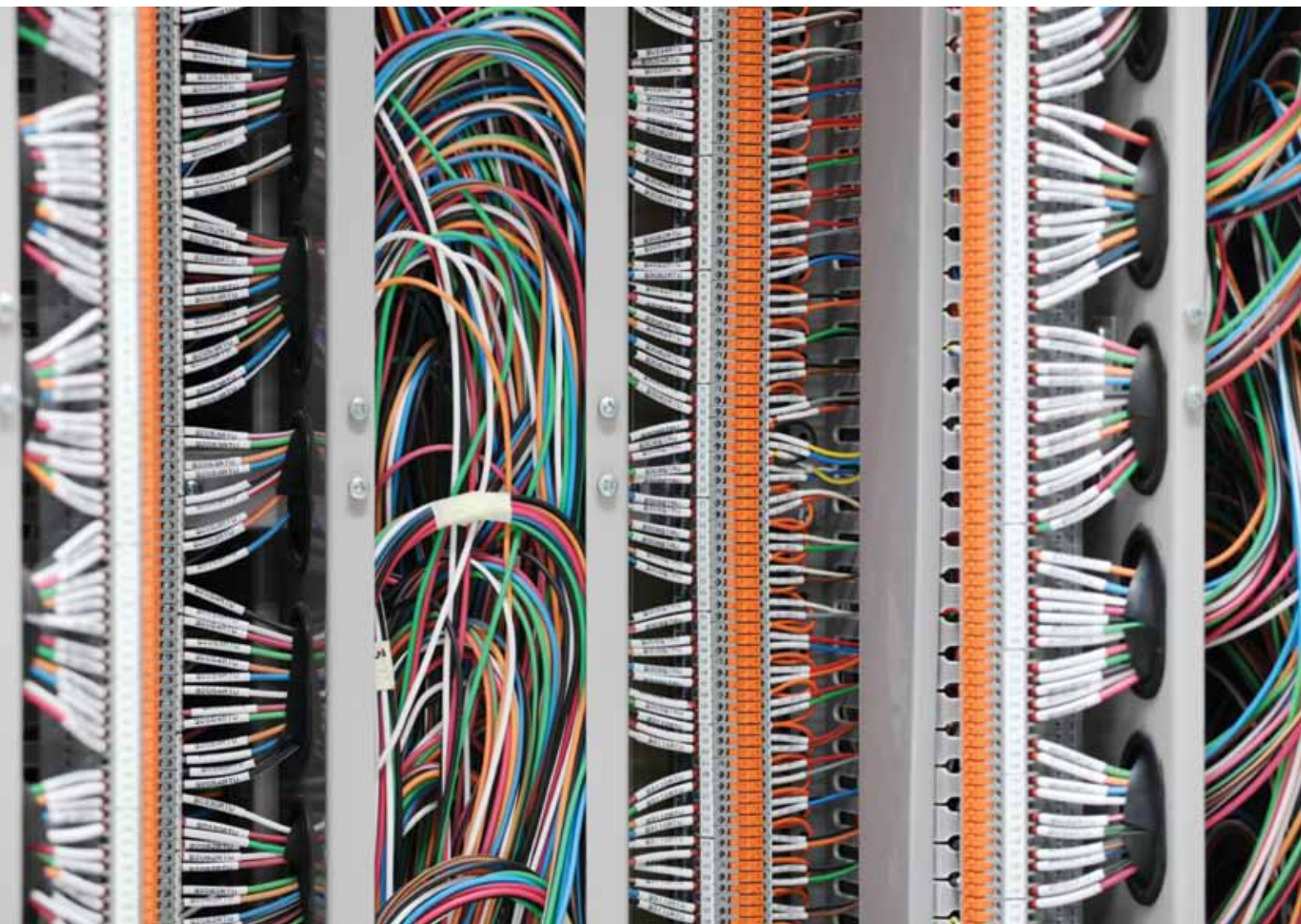




TELEPHONE AND ELECTRONIC CABLES



A-2Y(L)2Y



ELETTROTEK KABEL® A 2Y (L) 2Y



Construction:

Conductor:	solid red copper conductor 0,8 mmØ Cl. 1, acc to IEC 60228
Insulation:	PE type 2Y
Colour cores:	DIN VDE 0815
Stranding:	4 cores twisted to a star quad, 5 star quads stranded to sub-units, each 5 or 10 sub units stranded to main units stranded to cable core
Wrapping:	plastic foil
Screen:	electrostatic screen of plastic and aluminium tape + tinned drain-wire
Outer sheath:	black(RAL 9005),PE type 2Y

Features:

- Bd telephone-outdoor cable
- according to VDE 0816
- Laminated sheath
- Unfilled

Technical data:

Nominal voltage:	300 V
Test voltage:	core/core U eff. 500 V core/screen U eff. 2 kV
Temperature range	
<i>Fixed installation:</i>	max + 70 °C
<i>Flexible application:</i>	- 20 °C / + 50 °C
Loop resistance: at 20°C	0,6 mm=130 Ohm/km 0,6 mm=1,04 Ohm/km
Min. bending radius:	10 xd
Radiation resistance:	up to 80x10 ⁶ cJ/kg (up to 80 Mrad)
Insulation resistance:	min.50 MOhm _x /km
Line attenuation: of side circuits at 800 Hz	0,6 mm=1,04 dB/KM 0,8 mm=0,78 dB/KM
Impedance: of side circuits	0,6 mm=720 Ohm 0,8 mm=520 Ohm

TELEPHONE AND ELECTRONIC CABLES

A-2Y(L)2Y



ELETTROTEK KABEL® A 2Y (L) 2Y



Part no.	No. of cores x conductor diameter n x mm	Outer-Ø ca.mm ± 10%	Copper weight kg/km	Cable weight approx. kg/km	AWG no.*)
50010C7V022M06	2x2x0,6	8	11	82	20
50010C7V042M06	4x2x0,6	10	23	127	20
50010C7V062M06	6x2x0,6	11,5	34	132	20
50010C7V102M06	10x2x0,6	12,5	57	171	20
50010C7V202M06	20x2x0,6	15,5	113	268	20
50010C7V302M06	30x2x0,6	17,5	170	358	20
50010C7V402M06	40x2x0,6	19,5	226	438	20
50010C7V502M06	50x2x0,6	21	283	531	20
50010C7V702M06	70x2x0,6	24,5	396	712	20
50010C7VAA2M06	100x2x0,6	28	565	950	20
50010C7VAB2M06	150x2x0,6	33	848	1348	20
50010C7VAC2M06	200x2x0,6	37	1131	1758	20
50010C7VAD2M06	250x2x0,6	40,5	1414	2137	20
50010C7VAE2M06	300x2x0,6	44	1696	2533	20
50010C7VAF2M06	350x2x0,6	47,5	1979	2954	20
50010C7VAG2M06	400x2x0,6	50	2262	3342	20
50010C7V022M08	2x2x0,8	11	20	102	19
50010C7V042M08	4x2x0,8	12	40	158	19
50010C7V062M08	6x2x0,8	13	60	179	19
50010C7V102M08	10x2x0,8	14,5	101	241	19
50010C7V202M08	20x2x0,8	18	201	393	19
50010C7V302M08	30x2x0,8	21	302	540	19
50010C7V402M08	40x2x0,8	23	402	675	19
50010C7V502M08	50x2x0,8	25,5	503	842	19
50010C7V702M08	70x2x0,8	29	704	1105	19
50010C7VAA2M08	100x2x0,8	34	1005	1524	19
50010C7VAB2M08	150x2x0,8	40	1508	2208	19
50010C7VAC2M08	200x2x0,8	46,5	2011	2915	19
50010C7VAD2M08	250x2x0,8	51	2514	3575	19
50010C7VAE2M08	300x2x0,8	53	3016	4232	19
50010C7VAF2M08	350x2x0,8	56,5	3519	4940	19
50010C7VAG2M08	400x2x0,8	60	4022	5565	19
50010C7VAH2M08	500x2x0,8	68	5027	6955	19
50010C7VAI2M08	600x2x0,8	73	6032	8240	19

Other dimensions and colours available on request.

A-2YF(L)2Y



ELETTROTEK KABEL® A-2YF(L)2Y



Construction:

Conductor:	solid red copper conductor 0,8 mmØ Cl. 1, acc to IEC 60228
Insulation:	PE type 2Y11
Colour cores:	DIN VDE 0816
Stranding:	4 cores twisted to a star quad, 5 star quads stranded to sub-units, each 5 or 10 sub units stranded to main units stranded to cable core
Wrapping:	paper tape
Screen:	electrostatic screen of plastic and aluminium tape + tinned drain-wire
Outer sheath:	black(RAL 9005),PE type 2YM1

Features:

Bd telephone-outdoor cable
according to VDE 0816
Unfilled
transverse and longitudinally water proof

Technical data:

Nominal voltage:	225 V
Test voltage:	core/core U eff. 500 V core/screen U eff. 2 kV
Temperature range	
<i>Fixed installation:</i>	- 30 °C / + 70 °C
<i>Flexible application:</i>	- 20 °C / + 50 °C
Loop resistance: at 20°C	0,6 mm=130 Ohm/km 0,8 mm=73,2 Ohm/km
Min. bending radius:	7,5 xd
Radiation resistance:	up to 80x10 ⁶ cJ/kg (up to 80 Mrad)
Insulation resistance:	min.50 MOhm/km
Line attenuation: of side circuits at 800 Hz	0,6 mm=1,04 dB/KM 0,8 mm=0,78 dB/KM
Impedance: of side circuits	0,6 mm=720 Ohm 0,8 mm=520 Ohm

TELEPHONE AND ELECTRONIC CABLES

A-2YF(L)2Y



ELETTROTEK KABEL® A-2YF(L)2Y



Part no.	No. of cores x conductor diameter n x mm	Outer-Ø ca. mm ± 10%	Copper weight kg/km	Cable weight approx. kg/km	AWG no. *)
50020C7V022M06	2x2x0,6	7,5	11	80	20
50020C7V042M06	4x2x0,6	9	23	140	20
50020C7V062M06	6x2x0,6	12	34	150	20
50020C7V102M06	10x2x0,6	13,5	57	190	20
50020C7V202M06	20x2x0,6	16	113	310	20
50020C7V302M06	30x2x0,6	19	170	430	20
50020C7V402M06	40x2x0,6	20,5	226	545	20
50020C7V502M06	50x2x0,6	23	283	660	20
50020C7V702M06	70x2x0,6	26	396	895	20
50020C7VAA2M06	100x2x0,6	31,5	565	1230	20
50020C7VAB2M06	150x2x0,6	37,5	848	1780	20
50020C7VAC2M06	200x2x0,6	42,5	1131	2320	20
50020C7VAD2M06	250x2x0,6	47,5	1414	2910	20
50020C7VAE2M06	300x2x0,6	51,5	1696	3490	20
50020C7VAF2M06	350x2x0,6	55	1979	3970	20
50020C7VAG2M06	400x2x0,6	60,5	2262	4480	20
50020C7VAH2M06	500x2x0,6	60,5	2262	5460	20
50020C7V022M08	2x2x0,8	8,5	20,0	100	19
50020C7V042M08	4x2x0,8	10	40,0	180	19
50020C7V062M08	6x2x0,8	12,5	60,0	190	19
50020C7V102M08	10x2x0,8	15	101,0	280	19
50020C7V202M08	20x2x0,8	19	201,0	480	19
50020C7V302M08	30x2x0,8	23	302,0	670	19
50020C7V402M08	40x2x0,8	26	402,0	860	19
50020C7V502M08	50x2x0,8	29	503,0	1060	19
50020C7V702M08	70x2x0,8	33	704,0	1420	19
50020C7VAA2M08	100x2x0,8	39	1005,0	1980	19
50020C7VAB2M08	150x2x0,8	47	1508,0	2940	19
50020C7VAC2M08	200x2x0,8	51	2011,0	3780	19
50020C7VAD2M08	250x2x0,8	58	2514,0	4660	19
50020C7VAE2M08	300x2x0,8	62,5	3016,0	5570	19
50020C7VAF2M08	350x2x0,8	68	3519,0	6750	19
50020C7VAG2M08	400x2x0,8	73	4022,0	7630	19
50020C7VAH2M08	500x2x0,8	81,5	5027,0	9540	19

Other dimensions and colours available on request.

TELEPHONE AND ELECTRONIC CABLES

A-Y(St)YSYv



ELETTROTEK KABEL® A-Y(St)YSYv



Construction:

Conductor:	solid red copper conductor 0,8 mmØ Cl. 1, acc to IEC 60228
Insulation:	PVC,type Y11
Colour cores:	DIN VDE 0816
Stranding:	4 cores twisted to a star quad, 5 star quads stranded to sub-units,each 5 or 10 sub units stranded to main units stranded to cable core
Screen:	electrostatic screen of plastic and aluminium tape + tinned drain-wire
Inner sheath:	PVC type YM1
Armouring:	braid of galvanized steel wires
Outer sheath:	black(RAL 9005),PVC type YM1

Features:

Acc. to VDE 0815
 UV resistant
 underground use
 rodent protection acc. to standard HD 22.10.S1 and
 DIN VDE 0282 T10

Technical data:

Nominal voltage:	300 V
Test voltage:	500 V
Temperature range	
<i>Fixed installation:</i>	-30 /+70°C
<i>Flexible application:</i>	- 5 /+50°C
Min. bending radius:	10 xd
Operating capacity:	120 nF/km
Insulation resistance:	100 MOhm \times /km
Loop resistance:	73,2 Ohm/km

Applications:

For fixed installation, indoors, outdoors.
 in ground, as well as in concrete.

Part no.	No.of cores x conductor diameter n x mm	Outer-Ø ca.mm ± 10%	Copper weight kg/km	Cable weight approx. kg/km	AWG no.*)
50030C7V022M08	2x2x0,8 SW	11	25	180	19
50030C7V042M08	4x2x0,8 SW	12,5	45	235	19
50030C7V082M08	8x2x0,8 SW	15,5	85	340	19
50030C7V122M08	12x2x0,8 SW	16	126	410	19
50030C7V202M08	20x2x0,8 SW	19	206	560	19
50030C7V402M08	40x2x0,8 SW	26	407	960	19

Other dimensions and colours available on request.

J-YY Bd



ELETTROTEK KABEL® J-YY Bd

Construction:

Conductor:	solid red copper conductor 0,6 mmØ Cl. 1, acc to IEC 60228
Insulation:	PVC core insulation, compound type Y11 to DIN VDE 0207, insulation wall- thickness 0,2 mm to table 7
Colour cores:	DIN VDE 0815
Stranding:	the cores to a quad each 5 quads to a unit and several units are stranded in layer
Wrapping:	plastic foil
Outer sheath:	grey (RAL 7032), PVC, type YM1

Resistance:



Flame retardant and self extinguishing acc. to:
DIN VDE 0482 part 332-1-2
EN 60332-1-2
IEC 60332-1-2

Technical data:

Nominal voltage:	300 V
Test voltage: (50 Hz)	core/core U eff. 800 V
Temperature range	
<i>Fixed installation:</i>	- 30°C / +70°C
<i>Flexible application:</i>	- 5 °C / + 50 °C
Loop resistance: at 20°C	max. 130 Ohm/km
Min. bending radius	
<i>to DIN VDE 0891 part 5 during delivery:</i>	7,5 xd
<i>single bending without tension:</i>	2,5 xd
<i>repeated bending without tension:</i>	7,5 xd
Radiation resistance:	up to 80x10 ⁶ cJ/kg (up to 80 Mrad)
Insulation resistance:	min. 100 MOhm·km
Line attenuation: at 800 Hz	1,04 dB/KM
Impedance: of side circuits	0,6 mm=720 Ohm 0,8 mm=520 Ohm
Mutual capacitance: at 800 Hz	max. 100 nF/km
Capacitance unbalances at 800 Hz:	k ₁ max. 300 pF/100 m k ₉ , k ₁₂ 100 pF/100 m

Features:

telephone installation cable
according to VDE 0816

TELEPHONE AND ELECTRONIC CABLES

J-YY Bd



Part no.	No. of cores x conductor diameter n x mm	Outer-Ø ca. mm ± 10%	Copper weight kg/km	Cable weight approx. kg/km	AWG no. *)
50040C6W022M06	2x2x0,6	4,5	11	34	20
50047C6W022M06	2x2x0,6 T	5	14	40	20
50040C6W042M06	4x2x0,6	6,5	23	59	20
50047C6W042M06	4x2x0,6T	7	26	65	20
50040C6W062M06	6x2x0,6	7	34	74	20
50047C6W062M06	6x2x0,6T	7,5	37	80	20
50040C6W102M06	10x2x0,6	8,5	57	111	20
50040C6W162M06	16x2x0,6	10	90	160	20
50040C6W202M06	20x2x0,6	11	113	200	20
50040C6W242M06	24x2x0,6	11,5	136	224	20
50040C6W302M06	30x2x0,6	13	170	284	20
50040C6W402M06	40x2x0,6	15	226	364	20
50040C6W502M06	50x2x0,6	16,5	283	451	20
50040C6W602M06	60x2x0,6	17,5	339	529	20
50040C6W802M06	80x2x0,6	20,3	452	700	20
50040C6WAA2M06	100x2x0,6	22,3	565	850	20

Other dimensions and colours available on request.

J-Y(St)Y Lg



ELETTROTEK KABEL® J-Y(St)Y Lg



Construction:

Conductor:	solid red copper conductor 0,8 mmØ Cl. 1, acc to IEC 60228
Insulation:	PVC core insulation, compound type Y11 to DIN VDE 0207, insulation wall-thickness 0,2 mm to table 7
Colour cores:	DIN VDE 0815
Stranding:	the cores to a quad each 5 quads to a unit and several units are stranded in layer
Wrapping:	tinned copper drain wire, plastic coated
Screen:	electrostatic screen of plastic and aluminium tape + tinned drain-wire
Outer sheath:	grey (RAL 7032), PVC, type YM1

Resistance:



Flame retardant and self extinguishing acc. to:
DIN VDE 0482 part 332-1-2
EN 60332-1-2
IEC 60332-1-2

Technical data:

Nominal voltage:	0,6 mm-300 V 0,8 mm-300 V
Test voltage: (50 Hz)	core/core U eff. 800 V core/screen 800 V
Temperature range	
<i>Fixed installation:</i>	- 30°C / +70°C
<i>Flexible application:</i>	- 5 °C / + 50 °C
Loop resistance: at 20°C	0,6 mm-max. 130 Ohm/km 0,6 mm-max. 73,2 Ohm/km
Min. bending radius	
<i>to DIN VDE 0891 part 5 during delivery:</i>	7,5 xd
<i>single bending without tension:</i>	2,5 xd
<i>repeated bending without tension:</i>	7,5 xd
Radiation resistance:	up to 80x10 ⁶ cJ/kg (up to 80 Mrad)
Insulation resistance:	min. 100 MOhm x km
Line attenuation: at 800 Hz	1,04 dB/KM
Impedance: of side circuits	0,6 mm=720 Ohm 0,8 mm=520 Ohm
Mutual capacitance: at 800 Hz	max. 100 nF/km
Capacitance unbalances: at 800 Hz:	k ₁ max. 300 pF/100 m k ₉ , k ₁₂ 100 pF/100 m

Features:

telephone installation cable

according to VDE 0815

TELEPHONE AND ELECTRONIC CABLES

J-Y(St)Y Lg



ELETTROTEK KABEL® J-Y(St)Y Lg



Part no.	No. of cores x conductor diameter n x mm	Outer-Ø ca. mm ± 10%	Copper weight kg/km	Cable weight approx. kg/km	AWG no. *)
50050C6W022M08	2x2x0,8	7	21	60	19
50050C6W032M08	3x2x0,8	8,5	31	80	19
50050C6W042M08	4x2x0,8	9	41	100	19
50050C6W052M08	5x2x0,8	9,5	52	120	19
50050C6W062M08	6x2x0,8	11	62	140	19
50050C6W082M08	8x2x0,8	11,5	82	170	19
50050C6W102M08	10x2x0,8	13,2	102	220	19
50050C6W122M08	12x2x0,8	14,2	123	250	19
50050C6W162M08	16x2x0,8	16	164	320	19
50050C6W202M08	20x2x0,8	17	204	380	19
50050C6W242M08	24x2x0,8	19	244	460	19
50050C6W302M08	30x2x0,8	20,8	304	560	19
50050C6W402M08	40x2x0,8	23	405	710	19
50050C6W502M08	50x2x0,8	26	505	900	19
50050C6W602M08	60x2x0,8	28	606	1050	19
50050C6W802M08	80x2x0,8	31,5	807	1400	19
50050C6WAA2M08	100x2x0,8	33	1008	1750	19
50050C6W022M06	2x2x0,6	5	13	40	20
50050C6W032M06	3x2x0,6	6,3	18	50	20
50050C6W042M06	4x2x0,6	6,5	24	60	20
50050C6W052M06	5x2x0,6	7,2	30	70	20
50050C6W062M06	6x2x0,6	7,5	35	80	20
50050C6W082M06	8x2x0,6	8	46	90	20
50050C6W102M06	10x2x0,6	10	58	110	20
50050C6W122M06	12x2x0,6	10,2	71	130	20
50050C6W162M06	16x2x0,6	11	93	160	20
50050C6W202M06	20x2x0,6	12	116	190	20
50050C6W242M06	24x2x0,6	13	139	220	20
50050C6W302M06	30x2x0,6	14	172	280	20
50050C6W402M06	40x2x0,6	15	220	350	20
50050C6W502M06	50x2x0,6	17	286	430	20
50050C6W602M06	60x2x0,6	19	342	500	20
50050C6W802M06	80x2x0,6	21	455	640	20
50050C6WAA2M06	100x2x0,6	24	568	850	20

Other dimensions and colours available on request.

TELEPHONE AND ELECTRONIC CABLES

J-2Y(St)H



ELETTROTEK KABEL® J-2Y(St)H



Construction:

Conductor:	solid red copper conductor Cl. 1, acc to IEC 60228
Insulation:	PE type 2Y
Colour cores:	DIN VDE 0815
Stranding:	conductors twisted to 5 quads, twisted to units
Screen:	electrostatic screen of plastic and aluminium tape + tinned drain-wire
Outer sheath:	grey (RAL...), polymer compound flame retardant, halogen free

Resistance:



Flame retardant acc. to:
IEC 60332-3
EN 50266-2
DIN VDE 0482 part.266-2



Halogen free acc. to:
EN 50267-2-1
IEC 60754-1
DIN VDE 0482 part.267-2-1

Technical data:

Nominal voltage:	300 V
Test voltage: (50 Hz)	800 V
Temperature range	
<i>Fixed installation:</i>	- 30°C / +70°C
<i>Flexible application:</i>	- 5 °C / + 70 °C
Loop resistance: at 20°C	max. 130 Ohm/km
Min. bending radius	
<i>fixed laying:</i>	10 x d

Features:

St III Bd 16 Mbits/s (Kat.3) ISDN/EDV
(Z = 100 Ohm)

Part no.	No. of cores x conductor diameter n x mm	Outer-Ø ca. mm ± 10%	Copper weight kg/km	Cable weight approx. kg/km	AWG no. *)
50060C6W022M06	2x2x0,6	5,8	13	44	20
50060C6W042M06	4x2x0,6	9,2	24	80	20
50060C6W062M06	6x2x0,6	9,3	35	86	20
50060C6W082M06	8x2x0,6	9,5	46	105	20
50060C6W102M06	10x2x0,6	9,8	58	112	20
50060C6W202M06	20x2x0,6	12,7	116	218	20
50060C6W302M06	30x2x0,6	15	172	302	20
50060C6W402M06	40x2x0,6	16,8	229	376	20
50060C6W502M06	50x2x0,6	18,5	266	480	20
50060C6W602M06	60x2x0,6	20,2	342	560	20
50060C6W802M06	80x2x0,6	23	455	748	20
50060C6WAA2M06	100x2x0,6	25,2	588	940	20

Other dimensions and colours available on request.

TELEPHONE AND ELECTRONIC CABLES

J-H(St)H installation cable



ELETTROTEK KABEL® J-H(St)H



Construction:

Conductor:	solid red copper conductor Cl. 1, acc to IEC 60228
Insulation:	halogen-free compound type HI2, to DIN VDE part 23
Colour cores:	DIN VDE 0815
Stranding:	cores twisted in quads, quads stranded to units
Wrapping:	plastic tape
Screen:	electrostatic screen of plastic and aluminium tape + tinned drain-wire
Outer sheath:	grey (RAL...), halogen free, type HM2

Resistance:



Flame retardant acc. to:
IEC 60332-3
EN 50266-2
DIN VDE 0482 part.266-2



Halogen free acc. to:
EN 50267-2-1
IEC 60754-1
DIN VDE 0482 part.267-2-1



Low corrosiveness combustion gases:
IEC 60754-2
EN 50267-2-2
DIN VDE 0482 part.267-2-1



Low smoke emission acc. to:
EN 50268-2
IEC 61034-2
DIN VDE 0482 part. 268-2

Technical data:

Nominal voltage:	300 V
Test voltage:	800 V
Temperature range	
<i>Fixed installation:</i>	- 30°C / +70°C
<i>Flexible application:</i>	- 5 °C / + 70 °C
Min. bending radius	
<i>fixed laying:</i>	2,5 x d
<i>Flexible application:</i>	7,5 x d
Radiation resistance:	up to 100x10 ⁶ cJ/kg

Features:

Bd installation cable

Part no.	No. of cores x conductor diameter n x mm	Outer-Ø ca.mm ± 10%	Copper weight kg/km	Cable weight approx. kg/km	AWG no.)*
50070C6W022M06	2x2x0,6	5,8	14	50	20
50070C6W042M06	4x2x0,6	8,6	25	91	20
50070C6W062M06	6x2x0,6	9	37	100	20
50070C6W102M06	10x2x0,6	10,3	59	147	20
50070C6W202M06	20x2x0,6	15,5	116	308	20
50070C6W302M06	30x2x0,6	16,5	172	350	20
50070C6W402M06	40x2x0,6	18,6	229	465	20
50070C6W502M06	50x2x0,6	20,7	286	571	20
50070C6W602M06	60x2x0,6	22,8	342	662	20
50070C6W802M06	80x2x0,6	26,6	455	877	20
50070C6WAA2M06	100x2x0,6	28,2	568	1055	20
50070C6W022M08	2x2x0,8	6,8	25	70	19
50070C6W042M08	4x2x0,8	10,5	45	135	19
50070C6W062M08	6x2x0,8	10,9	65	151	19
50070C6W102M08	10x2x0,8	13,1	106	230	19
50070C6W202M08	20x2x0,8	20,4	206	507	19
50070C6W302M08	30x2x0,8	21,5	307	600	19
50070C6W402M08	40x2x0,8	24,5	407	788	19
50070C6W502M08	50x2x0,8	27,1	508	972	19
50070C6W602M08	60x2x0,8	29,4	608	1120	19
50070C6W802M08	80x2x0,8	33,2	809	1475	19
50070C6WAA2M08	100x2x0,8	37,2	1010	1804	19

Other dimensions and colours available on request.

JE-Y(St)Y

Bd Si industry-electronic cable acc.to DIN VDE 0815



ELETTROTEK KABEL® JE-Y(St)Y

Construction:

Conductor:	solid red copper conductor Cl. 1, acc to IEC 60228
Insulation:	Special PVC, type Y13, to DIN VDE 0207 part.4
Colour cores:	DIN VDE 0815 (with ring colours and ring groups)
Stranding:	2 core twisted in pair, 4 pairs to a unit and several units stranded in layers (for 2 pairs cable, 4 cores stranded to a quad)
Wrapping:	plastic tape
Screen:	electrostatic screen of plastic and aluminium tape + tinned drain-wire
Outer sheath:	grey (RAL 7032) or blue (RAL 5015) special PVC type YM1

Resistance:



Flame retardant and self extinguishing acc. to:
DIN VDE 0482 part 332-1-2
EN 60332-1-2
IEC 60332-1-2

Technical data:

Nominal voltage:	300 V
Test voltage: (50 Hz)	2 kV
Temperature range	
<i>Fixed installation:</i>	- 30°C / +70°C
<i>Flexible application:</i>	- 5 °C / + 50 °C
Min. bending radius	
<i>fixed laying:</i>	5 x d
Radiation resistance:	up to 80x10 ⁶ cJ/kg

Features:

Bd industry-electronic cable

TELEPHONE AND ELECTRONIC CABLES

JE-Y(St)Y

Bd Si industry-electronic cable acc.to DIN VDE 0815



ELETTROTEK KABEL® JE-Y(St)Y



BLUE:

Part no.	No. of cores x conductor diameter n x mm	Outer-Ø ca. mm ± 10%	Copper weight kg/km	Cable weight approx. kg/km	AWG no. *)
50080CBW012M08	1x2x0,8	5	15	40	20
50080CBW022M08	2x2x0,8	7	25	60	20
50080CBW042M08	4x2x0,8	9	45	95	20
50080CBW082M08	8x2x0,8	11	85	160	20
50080CBW122M08	12x2x0,8	14	125	235	20
50080CBW162M08	16x2x0,8	15	165	295	20
50080CBW202M08	20x2x0,8	16	205	355	20
50080CBW322M08	32x2x0,8	20	325	555	20
50080CBW402M08	40x2x0,8	22	405	670	20

GREY:

Part no.	No. of cores x conductor diameter n x mm	Outer-Ø ca. mm ± 10%	Copper weight kg/km	Cable weight approx. kg/km	AWG no. *)
50080C6W012M08	1x2x0,8	5	15	40	20
50080C6W022M08	2x2x0,8	7	25	60	20
50080C6W042M08	4x2x0,8	9	45	95	20
50080C6W082M08	8x2x0,8	11	85	160	20
50080C6W122M08	12x2x0,8	14	125	235	20
50080C6W162M08	16x2x0,8	15	165	295	20
50080C6W202M08	20x2x0,8	16	205	355	20
50080C6W322M08	32x2x0,8	20	325	555	20
50080C6W402M08	40x2x0,8	22	405	670	20

Other dimensions and colours available on request.

JE-LiYCY

Bd Si industry-electronic cable acc.to DIN VDE 0815



ELETTROTEK KABEL® JE-LIYCY



Construction:

Conductor:	stranded red copper conductor Cl. 2, acc to IEC 60228
Insulation:	PVC, type YI3,
Colour cores:	DIN VDE 0815 (with ring colours and ring groups)
Stranding:	2 core twisted in pair, 4 pairs to a unit and several units stranded in layers (for 2 pairs cable, 4 cores stranded to a quad)
Wrapping:	plastic tape
Screen:	tinned copper braid coverage approx. 85%
Outer sheath:	grey (RAL 7032) or blue (RAL 5015) special PVC type YM1

Resistance:



Flame retardant and self extinguishing acc. to:
DIN VDE 0482 part 332-1-2
EN 60332-1-2
IEC 60332-1-2

Technical data:

Nominal voltage:	300 V
Test voltage: (50 Hz)	2 kV
Temperature range	
<i>Fixed installation:</i>	- 30°C / +70°C
<i>Flexible application:</i>	- 5 °C / + 50 °C
Min. bending radius	
<i>fixed laying:</i>	5 x d
Radiation resistance:	up to 80x10 ⁶ cJ/kg

TELEPHONE AND ELECTRONIC CABLES

JE-LiYCY

Bd Si industry-electronic cable acc.to DIN VDE 0815



ELETTROTEK KABEL® JE-LiYCY

GREY:

Part no.	No.of cores x cross section n x mm ²	Outer-Ø ca.mm ± 10%	Copper weight kg/km	Cable weight approx. kg/km	AWG no.)*
50090C6W022M05	2x2x0,5	9	44	102	20
50090C6W042M05	4x2x0,5	12	80	168	20
50090C6W082M05	8x2x0,5	17	152	297	20
50090C6W122M05	12x2x0,5	18	192	357	20
50090C6W202M05	20x2x0,5	22	288	555	20
50090C6W322M05	32x2x0,5	26	439	852	20
50090C6W402M05	40x2x0,5	29	531	1005	20

BLUE:

Part no.	No.of cores x cross section n x mm ²	Outer-Ø ca.mm ± 10%	Copper weight kg/km	Cable weight approx. kg/km	AWG no.)*
50090CBW022M05	2x2x0,5	9	44	102	20
50090CBW042M05	4x2x0,5	12	80	168	20
50090CBW082M05	8x2x0,5	17	152	297	20
50090CBW122M05	12x2x0,5	18	192	357	20
50090CBW202M05	20x2x0,5	22	288	555	20
50090CBW322M05	32x2x0,5	26	439	852	20
50090CBW402M05	40x2x0,5	29	531	1005	20

Other dimensions and colours available on request.

TELEPHONE AND ELECTRONIC CABLES

JE-LiHCH



ELETTROTEK KABEL® JE-LiHCH

Resistance:



Flame retardant acc. to:
IEC 60332-3
EN 50266-2
DIN VDE 0482 part.266-2



Halogen free acc. to:
EN 50267-2-1
IEC 60754-1
DIN VDE 0482 part.267-2-1



Low corrosiveness combustion gases:
IEC 60754-2
EN 50267-2-2
DIN VDE 0482 part.267-2



Low smoke emission acc. to:
EN 50268-2
IEC 61034-2
DIN VDE 0482 part. 268-2

Construction:

- Conductor:** stranded red copper conductor Cl. 2, acc to IEC 60228
- Insulation:** Halogen-free core insulation, type HI1 or HI2 to DIN VDE part 23, insulation wall thickness 0,3 mm
- Colour cores:** DIN VDE 0815 (with ring colours and ring groups)
- Stranding:** 2 core twisted in pair, 4 pairs to a unit and several units stranded in layers (for 2 pairs cable, 4 cores stranded to a quad)
- Wrapping:** plastic tape
- Screen:** tinned copper braid coverage approx. 85%
- Outer sheath:** grey (RAL 7032) or blue (RAL 5015) halogen free compound type HM1 or HM2

Technical data:

- Nominal voltage:** 300 V
- Test voltage:** 2 kV
- Temperature range**
- Fixed installation:* - 30°C / +70°C
- Flexible application:* - 5 °C / + 50 °C
- Min. bending radius** 7,5 x d
- Radiation resistance:** up to 100x10⁶ cJ/kg

Features:

Bd industry-electronic cable

Part no.	No. of cores x cross section n x mm ²	Outer-Ø ca. mm ± 10%	Copper weight kg/km	Cable weight approx. kg/km	AWG no. *)
50100C6W022M05	2x2x0,5	9	44	102	20
50100C6W042M05	4x2x0,5	12	80	168	20
50100C6W082M05	8x2x0,5	17	152	297	20
50100C6W122M05	12x2x0,5	18	192	357	20
50100C6W202M05	20x2x0,5	22	288	555	20
50100C6W322M05	32x2x0,5	26	439	852	20
50100C6W402M05	40x2x0,5	29	531	1005	20

Other dimensions and colours available on request.